



USER'S MANUAL


NAVIGATE THROUGH THE MOODLE PLATFORM



Co-funded by
the European Union

Funded by the European Union. Views and opinions expressed are however those of the author(s) only and do not necessarily reflect those of the European Union or the European Education and Culture Executive Agency (EACEA). Neither the European Union nor EACEA can be held responsible for them.

PROJECT INFORMATION.

Project title:	To chatbOt in higheR Education or not to chatbOt?
Project acronym:	OREO
Project identifier:	2023-1-EL01-KA220-HED-000157901
Funding Agency:	EL01 - Greek State Scholarship's Foundation (IKY)
Leading Partner:	Laboratory of Law and Informatics (LLI, EL), National and Kapodistrian University of Athens
Project Partners:	PARAGON: Education, Technology, Communications (PARAGON, EL), Westfaelische Wilhelmsuniversitaet Muenster (UoM, DE) Tallinn University (TU, EE) Fundación Siglo22 (Siglo22, ES)
Licensed under:	Creative Commons Attribution- ShareAlike 4.0 International 

DOCUMENT INFORMATION.

Document title:	USER'S MANUAL
Document author:	Fundación Siglo22
Version:	1.0
Date:	22-10-2024



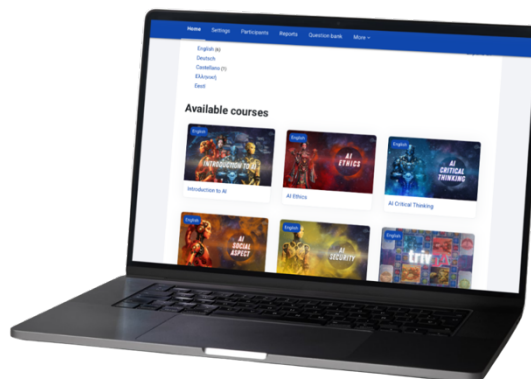
CONTENT TABLE

Manual for navigating the oreo moodle platform	3
1. ACCESS TO THE PLATFORM.....	3
2. COURSE LANGUAGE SELECTION.....	3
3. MOODLE STRUCTURE.....	4
HOME PAGE	4
ORGANIZATION OF THE COURSES.....	4
4. NAVIGATION WITHIN A COURSE.....	5
5. USE OF ADDITIONAL RESOURCES.....	5
6. ACTIVITIES AND QUESTIONNAIRES	5
7. PARTICIPATION IN FORUMS AND DISCUSSIONS	5

MANUAL FOR NAVIGATING THE OREO MOODLE PLATFORM

Welcome to the OREO project Moodle: <https://learning.oreo-project.eu/?redirect=0>. This manual is designed to help you become familiar with the platform's functionalities, navigate through the different courses and make the most of the available resources. Here you will find all the information you need to start exploring the content effectively.

OREO's Moodle platform is an educational tool that facilitates online learning, offering a clear structure and interactive resources to ensure an enriching experience. Whether you are accessing it for the first time or need specific guidance, this manual will be your step-by-step guide.



1. ACCESS TO THE PLATFORM

URL: Ve a <https://learning.oreo-project.eu/?redirect=0>.

Login:

- Click on the “Login” button at the top right.
- Enter your username and password. If you do not have an account, select the “Create new account” option or contact the administrator for assistance. Successful access to your account will allow you to explore content, participate in activities and track your progress within the courses available.

2. COURSE LANGUAGE SELECTION

OREO's Moodle platform is designed to be inclusive and accessible in multiple languages. Before you start, be sure to select the language you prefer to work in. The available options are:

- **English**
- **Deutsch**
- **Castellano**
- **Ελληνική**
- **Eesti**



To select the language:

1. Go to the main menu or to the beginning of the course.
2. Click on the desired language. This will automatically adjust the content and resources to the selected language, ensuring a personalized and understandable experience.

3. MOODLE STRUCTURE

Moodle is organized into six main courses, each of which addresses a fundamental aspect of the OREO project. Below, we explain how the content is structured:

HOME PAGE

- The main page shows a list of available courses.
- You can search for the course you need or browse the content using the navigation bar. This view gives you an overview of the educational resources available to you.

ORGANIZATION OF THE COURSES

The six courses available are:

- **AI Ethics:** An exploration of ethical principles in the development and use of AI.
- **AI Critical Thinking:** Activities focused on the critical evaluation of AI-generated applications and responses.
- **AI Social Aspect:** An analysis of the social impact of artificial intelligence on our society.
- **AI Security:** Guidelines on security in the use and development of artificial intelligence.
- **OREO Board Game:** An interactive course based on a game designed to consolidate the acquired learning.

Each course is divided into the following modules:

- **Introduction:** A summary of the objectives and content of the module.
- **Theory:** Educational materials and key concepts.
- **Practice:** Activities designed to apply the knowledge.
- **Resources:** Additional and complementary material to support learning.



4. NAVIGATION WITHIN A COURSE

1. **Select the desired course:** From the home page, click on the title of the course you are interested in.
2. **Review the “Introduction” section:** Here you will find a detailed summary of what you will learn in the course.
3. **Navigate through the sections:** Use the “Next” and “Previous” buttons or the side menu to move between parts of the course.
4. **Complete the activities:** Be sure to follow the instructions provided to complete the tasks effectively.

5. USE OF ADDITIONAL RESOURCES

- **File downloads:** Documents in PDF, Word or other formats are available for direct download.
- **External links:** Some resources lead to external websites. Open them in a new tab so as not to lose your progress.
- **Videos:** Click on the “Play” button to play videos directly from the platform.

6. ACTIVITIES AND QUESTIONNAIRES

Access the “Practice” section within the course.

1. Select the activity or questionnaire you wish to do.
2. Read the instructions carefully before you begin.
3. Once you have completed the activity, click on “Submit” to send your answers.

7. PARTICIPATION IN FORUMS AND DISCUSSIONS

1. Go to the “Forums” section from the main menu of the course.
2. Explore the existing postings to familiarize yourself with the active discussions.
3. Participate by replying to posts or creating a new discussion topic.

Explore and learn with OREO's Moodle! The platform is designed to offer an enriching learning experience. If you have questions, the project team will be happy to help you every step of the way - good luck!



HELLENIC REPUBLIC
**National and Kapodistrian
University of Athens**

— EST. 1837 —



**Universität
Münster**



TALLINNA ÜLIKOOL
**Ühiskonnateaduste
instituut**



**Co-funded by
the European Union**

Funded by the European Union. Views and opinions expressed are however those of the author(s) only and do not necessarily reflect those of the European Union or the European Education and Culture Executive Agency (EACEA). Neither the European Union nor EACEA can be held responsible for them.